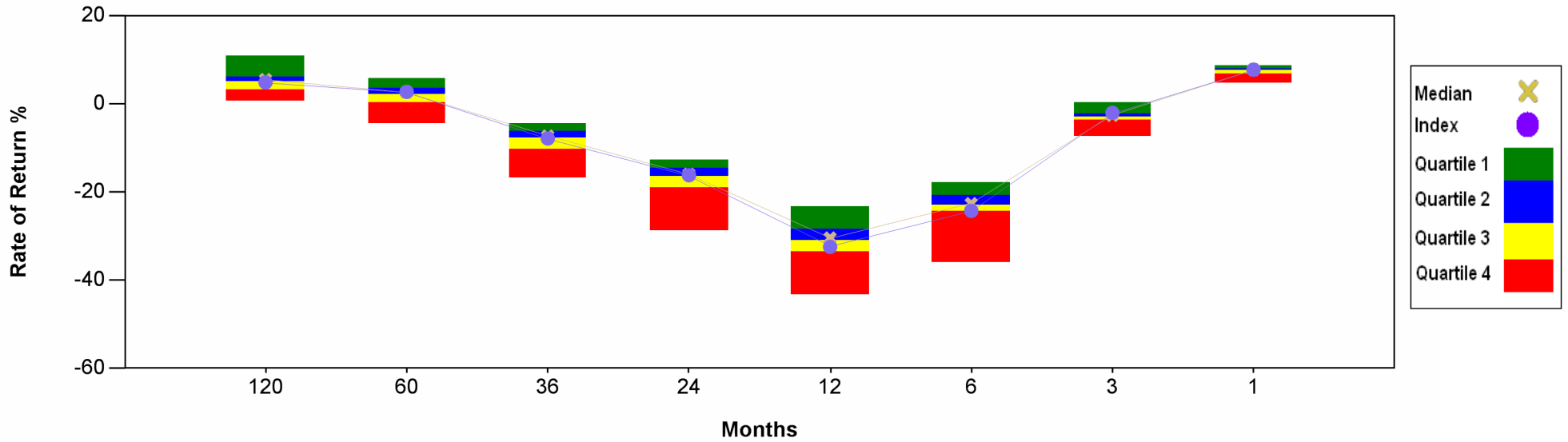
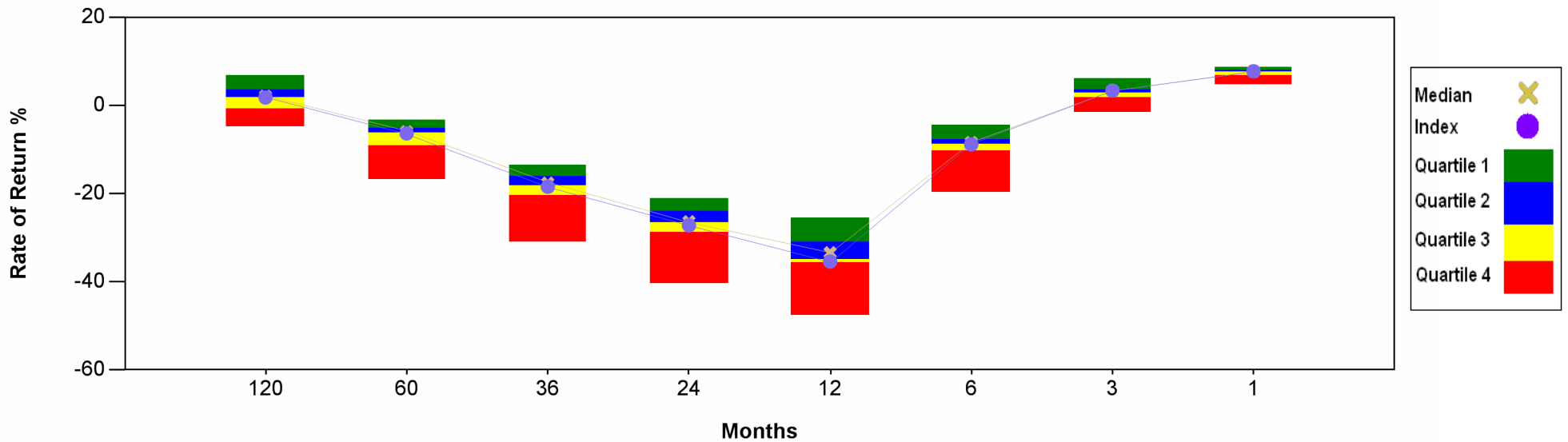


Equity Pooled Pension Funds Results of Lump Sum Deposit for period ending March 31, 2009

Lump Sum Deposit



Monthly Deposit



Equity Pooled Pension Funds

Results of Monthly Deposit for period ending March 31, 2009

Monthly Deposit	1 Month		3 Month		6 Month		1 Year		2 Year		3 Year		5 Year		10 Year	
Fund Name	Rtn %	Rank	Rtn %	Rank	Rtn %	Rank	Rtn %	Rank	Rtn %	Rank	Rtn %	Rank	Rtn %	Rank	Rtn %	Rank
Addenda Canadian Equity	7.27	25	2.20	26	-10.30	28	-36.59	28	-29.67	28						
AMI Canadian Equity	8.54	7	6.15	3	-5.29	3	-32.03	15	-26.39	18	-18.50	21	-7.10	20	1.90	18
AMI Canadian Equity Capped	8.60	5	6.36	1	-5.04	2	-31.99	14	-26.48	20	-18.59	22	-7.16	21		
AMI Growing Income	5.14	33	-1.06	33	-11.89	31	-27.83	4	-21.50	2	-13.96	2	-4.68	9	3.74	8
Barclays Active Canadian Equity	7.62	20	4.24	6	-6.65	6	-31.34	12	-23.57	8	-15.42	8	-3.92	4	4.20	6
Barclays S&P/TSX Composite Index	7.78	18	3.40	16	-8.77	20	-35.21	25	-26.85	22	-18.07	19	-6.03	19	2.04	17
Beutel Goodman Canadian Equity	7.55	22	-0.02	31	-9.15	25	-28.48	6	-21.75	3	-14.26	3	-4.51	7	4.64	5
Burgundy Canadian Equity	6.58	30	-0.26	32	-8.19	16	-25.84	2	-22.93	6	-15.70	9	-5.87	16	6.17	2
Burgundy Focus Canadian Equity	7.39	23	1.64	29	-6.66	7	-25.38	1	-22.39	5	-14.84	6	-5.02	11		
CC&L Canadian Equity	8.69	3	4.78	5	-5.75	4	-32.26	16	-23.90	10	-14.81	5	-3.23	2	3.90	7
FGP Canadian Equity	8.43	8	3.69	10	-10.83	29	-34.78	21	-27.86	25	-19.51	23	-7.66	25	5.57	3
Great-West Equity (INDEX)	7.81	15	3.54	13	-8.55	18	-34.75	20	-26.30	17	-17.56	17	-5.69	15	2.14	15
Great-West Equity No. 3	6.31	31	3.08	19	-10.14	27	-38.44	31	-30.05	30	-21.29	29	-9.29	28	0.75	23
Guardian Vector Equity	7.30	24	2.76	22	-7.50	8	-30.78	9	-23.50	7	-16.63	12	-7.61	24	1.84	19
Guardian Vector Premium Growth	8.86	1	5.98	4	-4.43	1	-31.32	11	-25.05	14	-17.03	14	-5.68	14	3.62	9
HSBC Canadian Equity	8.84	2	4.19	7	-7.88	13	-30.95	10	-24.28	11	-16.25	11	-5.45	13	1.34	21
Integra Canadian Value Grth	7.81	16	3.41	15	-8.57	19	-35.55	27	-28.81	27	-20.51	28	-9.12	27	-0.04	25
Jarislowsky, Fraser Equity	7.02	27	2.31	24	-7.56	9	-28.30	5	-20.88	1	-13.36	1	-3.06	1	6.79	1
KBSH Canadian Equity	8.12	11	3.57	11	-9.14	24	-38.18	30	-30.37	31	-21.78	31	-8.71	26	0.15	24
Legg Mason Canadian Core Equity	6.62	29	2.23	25	-9.07	23	-34.90	23	-26.13	16	-17.05	15	-4.57	8	2.50	13
Legg Mason North Amer. Eq. (C+F)	6.23	32	-1.55	34	-13.02	32	-34.00	18	-27.22	23	-20.20	27	-9.97	30	-2.68	29
London Life Equity	7.75	19	3.56	12	-7.87	11	-32.75	17	-24.83	13	-16.07	10	-4.19	5	3.44	11
McLean Budden Cdn Equity Gr'th	8.13	10	6.34	2	-6.05	5	-36.75	29	-29.85	29	-20.12	26	-7.36	23	2.43	14
McLean Budden Cdn Equity Value	4.93	34	0.15	30	-8.18	15	-27.08	3	-22.19	4	-14.72	4	-4.48	6	5.38	4
PH + N Equity Plus (C+F)	8.66	4	3.32	18	-11.03	30	-38.44	32	-30.55	32	-21.33	30	-9.80	29	-0.68	27

Equity Pooled Pension Funds

Results of Monthly Deposit for period ending March 31, 2009

Monthly Deposit	1 Month		3 Month		6 Month		1 Year		2 Year		3 Year		5 Year		10 Year	
Fund Name	Rtn %	Rank	Rtn %	Rank	Rtn %	Rank	Rtn %	Rank	Rtn %	Rank	Rtn %	Rank	Rtn %	Rank	Rtn %	Rank
Sceptre Equity (C+F)	8.18	9	2.91	21	-8.83	22	-35.00	24	-28.14	26	-19.73	25	-7.31	22	1.62	20
Standard Life Canadian Equity	7.58	21	3.37	17	-9.37	26	-35.32	26	-26.79	21	-17.59	18	-5.12	12	2.89	12
Standard Life Canadian Equity Index	7.99	12	3.87	8	-7.72	10	-34.67	19	-27.23	24	-18.24	20	-5.92	17	2.13	16
Standard Life Capped Canadian Equity	7.86	14	3.81	9	-8.79	21	-34.80	22	-26.45	19	-17.35	16	-5.01	10		
T.A.L. Canadian Eq. S&P/TSX Index	7.80	17	3.44	14	-14.43	33	-41.11	33	-33.93	33	-24.82	32	-11.43	32	-1.50	28
T.A.L. Canadian Equity	7.98	13	3.06	20	-19.64	34	-47.57	34	-40.44	34	-30.88	33	-16.64	33	-4.71	30
Trimark Canadian	8.59	6	2.02	27	-8.02	14	-29.23	7	-25.63	15	-19.65	24	-10.11	31	-0.60	26
UBS (Canada) Canada Plus (C+F)	7.16	26	1.78	28	-8.20	17	-30.74	8	-24.43	12	-16.69	13	-5.96	18	1.00	22
UBS (Canada) Canadian Equity	6.98	28	2.67	23	-7.87	12	-31.44	13	-23.77	9	-14.93	7	-3.30	3	3.58	10
Median	7.79		3.35		-8.37		-33.37		-26.35		-17.57		-5.94		2.13	
S&P/TSX	7.79		3.40		-8.80		-35.40		-27.18		-18.41		-6.32		1.84	
No. of Funds	34		34		34		34		34		33		33		30	